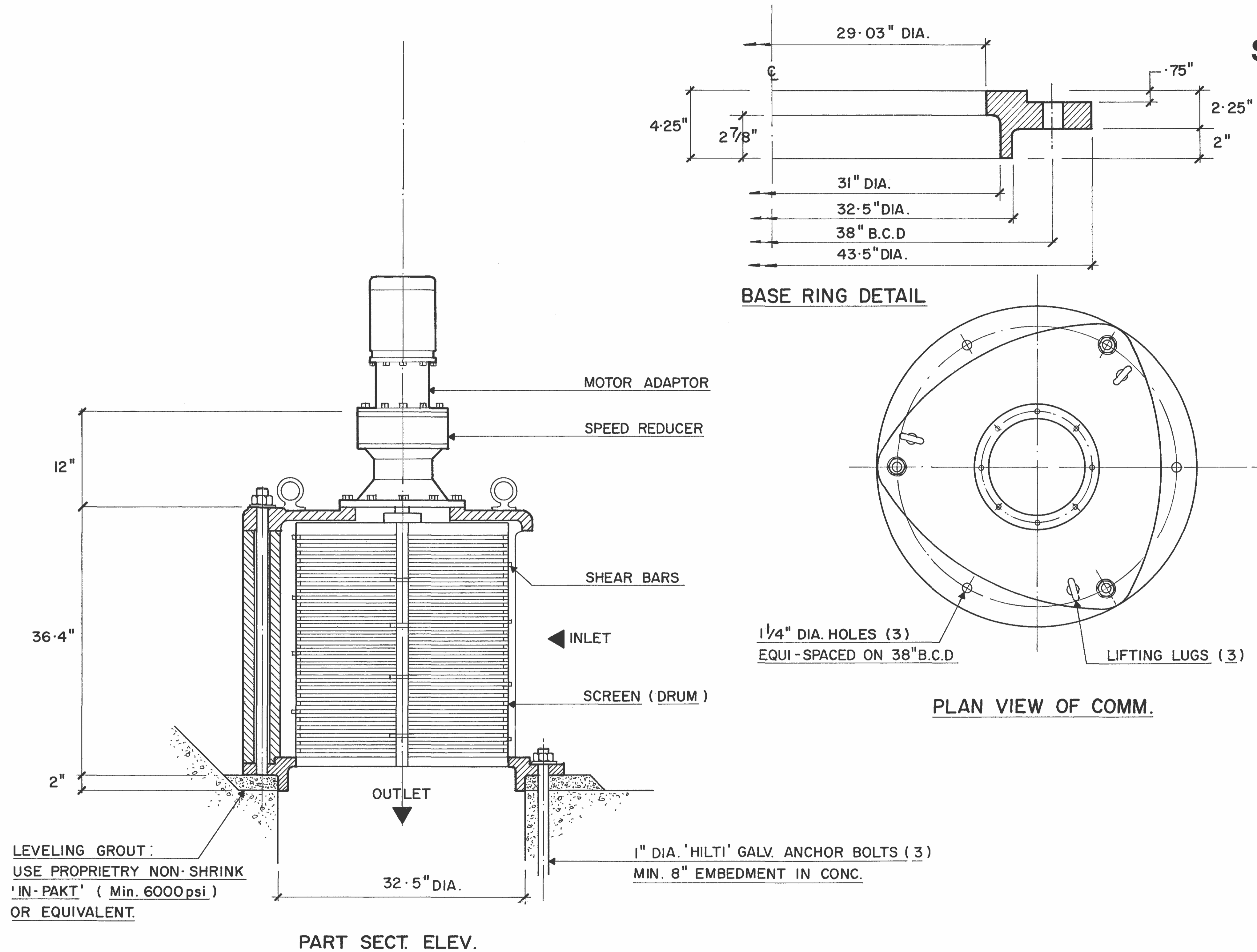


# MODEL 26A STANDARD SERIAL No. \_\_\_\_\_



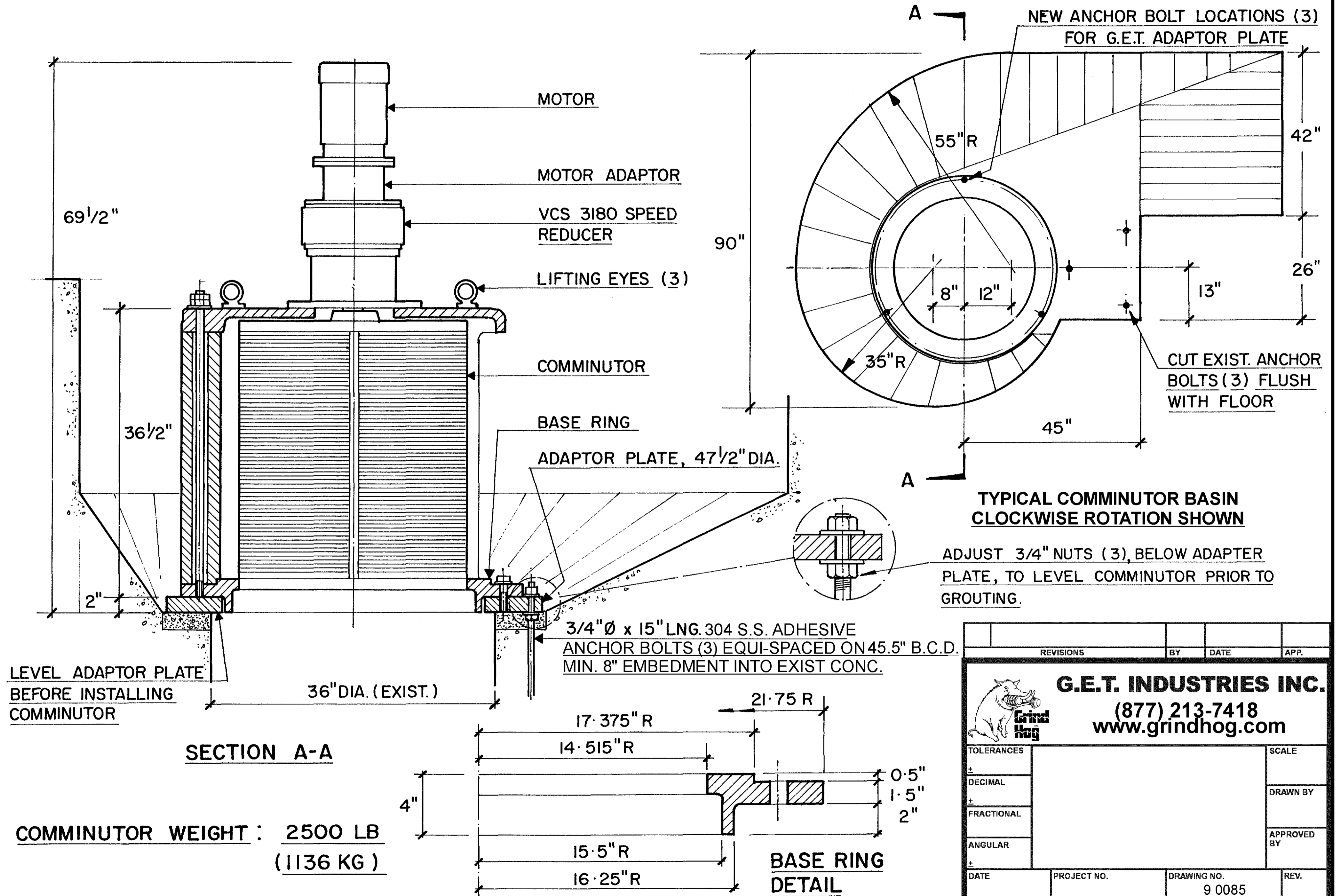
### MATERIALS OF CONSTRUCTION & GENERAL ENGINEERING DATA


|                                  |  |                     |                                       |                                |                        |
|----------------------------------|--|---------------------|---------------------------------------|--------------------------------|------------------------|
| <b>HOUSING:</b>                  | GREY IRON                              | <b>CAPACITY:</b>    | 20 MGD (US)/75700 m <sup>3</sup> /day | <b>INLET AREA:</b>             | 1076 sq in 6942 cm sq  |
| <b>DRUM (SCREEN):</b>            | DUCTILE IRON (ASTM 536 GRADE 60-45-18) | <b>DRUM SPEED:</b>  | 30 RPM                                | <b>OUTLET AREA:</b>            | 537 sq in 3465 cm sq   |
| <b>SHEAR BARS:</b>               | AISI-A2 HIGH ALLOY TOOL STEEL          | <b>ROTATION:</b>    | CLOCKWISE                             | <b>DRUM DIAMETER:</b>          | 29 in 737 cm           |
| <b>CUTTING BARS:</b>             | AISI-01 TOOL STEEL REVERSIBLE          | <b>SLOT WIDTH:</b>  | 0.470 in / 12 mm                      | <b>WEIGHT:</b>                 | 2500 lb 1136 kg        |
| <b>HARDWARE &amp; FASTENERS:</b> | 304 STAINLESS STEEL                    | <b>NO OF SLOTS:</b> | 116                                   |                                |                        |
| <b>MOTOR MANUFACTURER:</b>       |  | <b>POWER:</b>       | _____ / _____ / _____                 | <b>RPM:</b>                    | 1750                   |
| <b>STYLE:</b> TEFC (IP55)        | <b>HP:</b> 3                           | <b>KW:</b> 2.24     | <b>FRAME:</b> 182TC                   | <b>FLANGE:</b> 'C'             | <b>RATING:</b> 16.1 HP |
|                                  |  |                     |                                       | <b>SM-CYCLO REDUCER MODEL:</b> | V6170                  |
|                                  |  |                     |                                       | <b>RATIO:</b>                  | 59:1                   |

|                               |            |             |             |             |
|-------------------------------|------------|-------------|-------------|-------------|
| REVISIONS                     |            | BY          | DATE        | APP.        |
| <b>G.E.T. INDUSTRIES INC.</b> |            |             |             |             |
| (877) 213-7418                |            |             |             |             |
| www.grindhog.com              |            |             |             |             |
| TOLERANCES                    |            |             |             | SCALE       |
| +                             | DECIMAL    |             |             | NTS         |
| +                             | FRACTIONAL |             |             | DRAWN BY    |
| +                             | ANGULAR    |             |             | APPROVED BY |
| +                             | DATE       | PROJECT NO. | DRAWING NO. | REV.        |
|                               |            |             | 6 0290      |             |

# Grind Hog MODEL 26A (CAPACITY: 20 USMGD)

## REPLACEMENT OF JONES & ATTWOOD MODEL 36T



| REVISIONS   |            | BY          | DATE        | APP. |
|---|------------|-------------|-------------|------|
|  <b>G.E.T. INDUSTRIES INC.</b><br>(877) 213-7418<br>www.grindhog.com |            |             |             |      |
| TOLERANCES  |            | SCALE       |             |      |
| ±   | DECIMAL    | DRAWN BY    |             |      |
| ±   | FRACTIONAL |             |             |      |
| ANGULAR   |            | APPROVED BY |             |      |
| ±   | DATE       | PROJECT NO. | DRAWING NO. | REV. |
|   |            |             | 9 0085      |      |