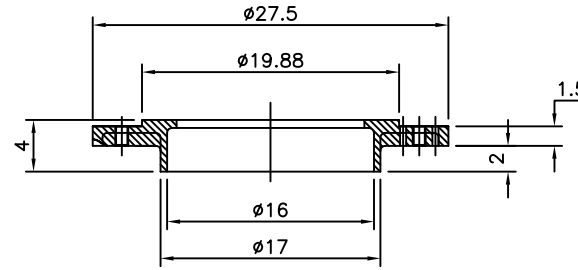
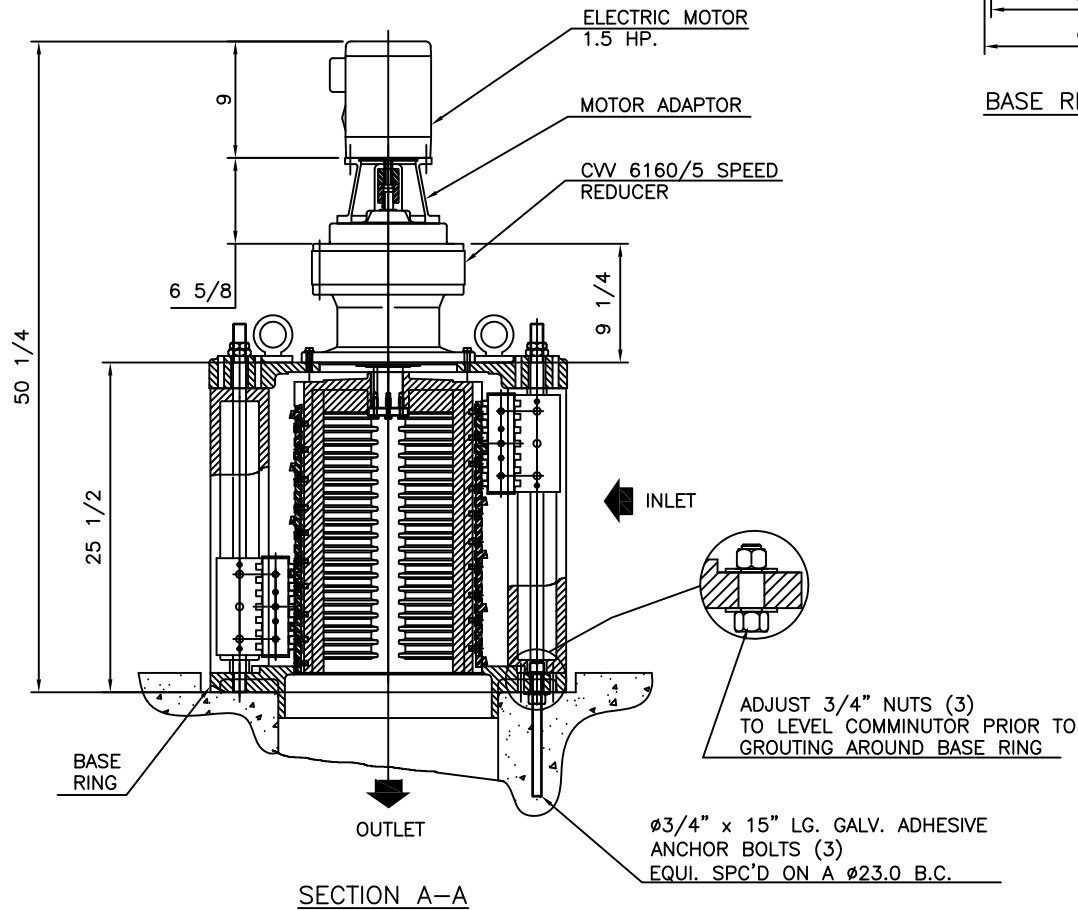


MODEL 16B STANDARD

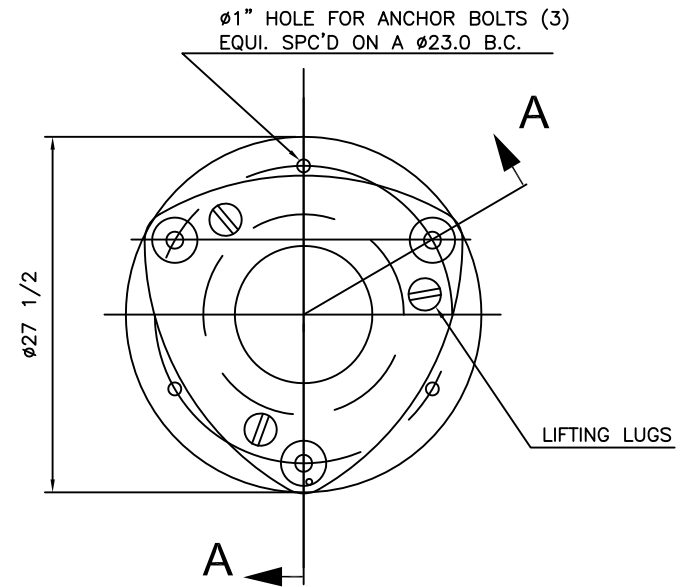
SERIAL No. X



BASE RING DETAIL



SECTION A-A



TOP VIEW OF COMMINUTOR

MATERIALS OF CONSTRUCTION & GENERAL ENGINEERING DATA

HOUSING:	GREY IRON	CAPACITY	4.5 MGD (US) / 17000 m3/ day	INLET AREA	274 SQ IN	1767 cm sq							
DRUM (SCREEN):	DUCTILE IRON (ASTM 536 GRADE 60-45-18)	DRUM SPEED	30 RPM	OUTLET AREA	121 SQ IN	780.6 cm sq							
SHEAR BARS:	AISI-A2 HIGH ALLOY TOOL STEEL	ROTATION	CLOCKWISE	DRUM DIAMETER	14.5 IN	36.8 cm							
CUTTING BARS:	AISI-01 TOOL STEEL REVERSIBLE	SLOT WIDTH	.470 IN / 12 mm	WEIGHT	850 LB	385 kg							
HARDWARE & FASTENERS:	304 STAINLESS STEEL	No. OF SLOTS	76										
MOTOR MANUFACTURER:		POWER:	X	RPM:	1750	REDUCER:	SM - CYCLO	MODEL:	V6160				
STYLE:	TEFC (IP55)	HP:	1.5	KW:	1.12	FRAME:	56C	FLANGE:	'C'	RATIO:	59:1	RATING:	7.72 HP

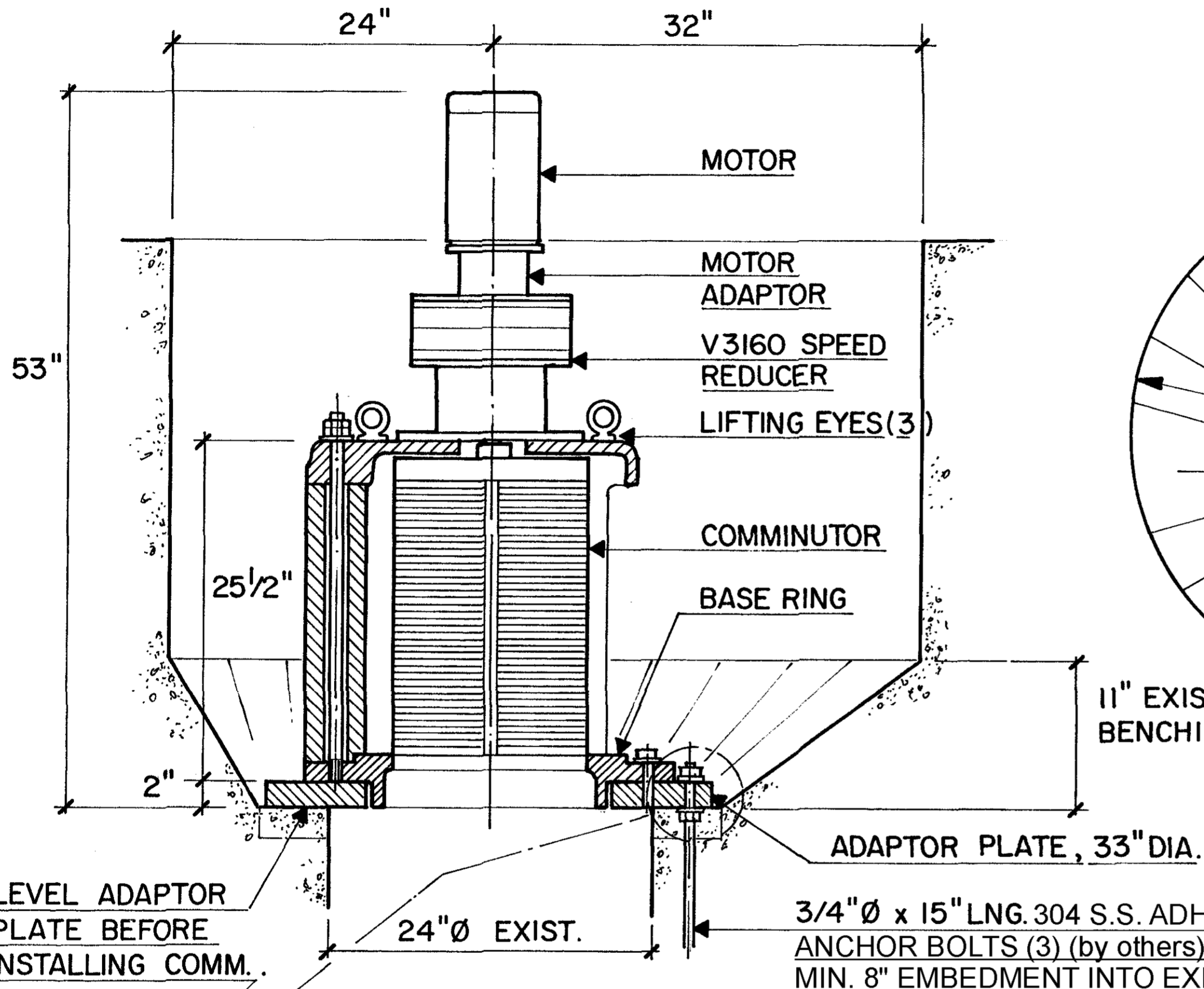
G.E.T. INDUSTRIES INC.

 get@grindhog.com
 www.grindhog.com
 1 (877) 213-7418

TOLERANCES	INFO.	SCALE	NTS
DECIMAL	INFO.	DRAWN BY	G.P.
FRACTIONAL	INFO.	APPROVED BY	W.D.M.
ANGULAR	INFO.	DATE	
		DWG. No.	6 0230
		REV.	

Grind Hog MODEL 16B (CAPACITY: 4.5 USMGD)

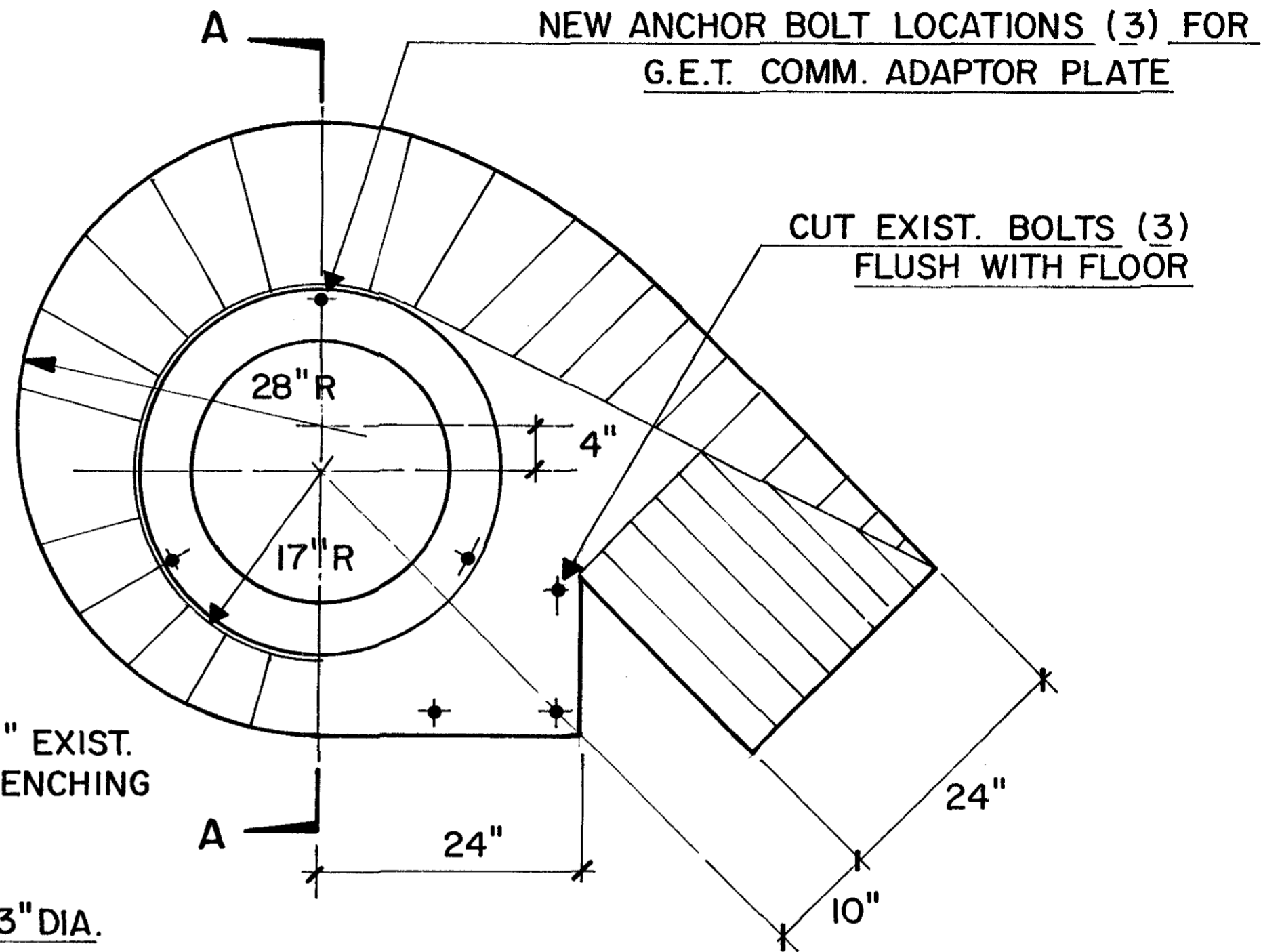
REPLACEMENT OF JONES & ATTWOOD MODEL 25RM



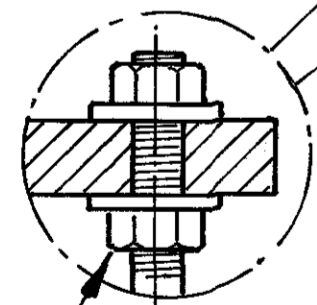
LEVEL ADAPTOR
PLATE BEFORE
INSTALLING COMM.

3/4" Ø x 15" LNG. 304 S.S. ADHESIVE
ANCHOR BOLTS (3) (by others) EQUI-SPACED ON 30.5" B.C.D.
MIN. 8" EMBEDMENT INTO EXIST. CONC.

SECTION A-A

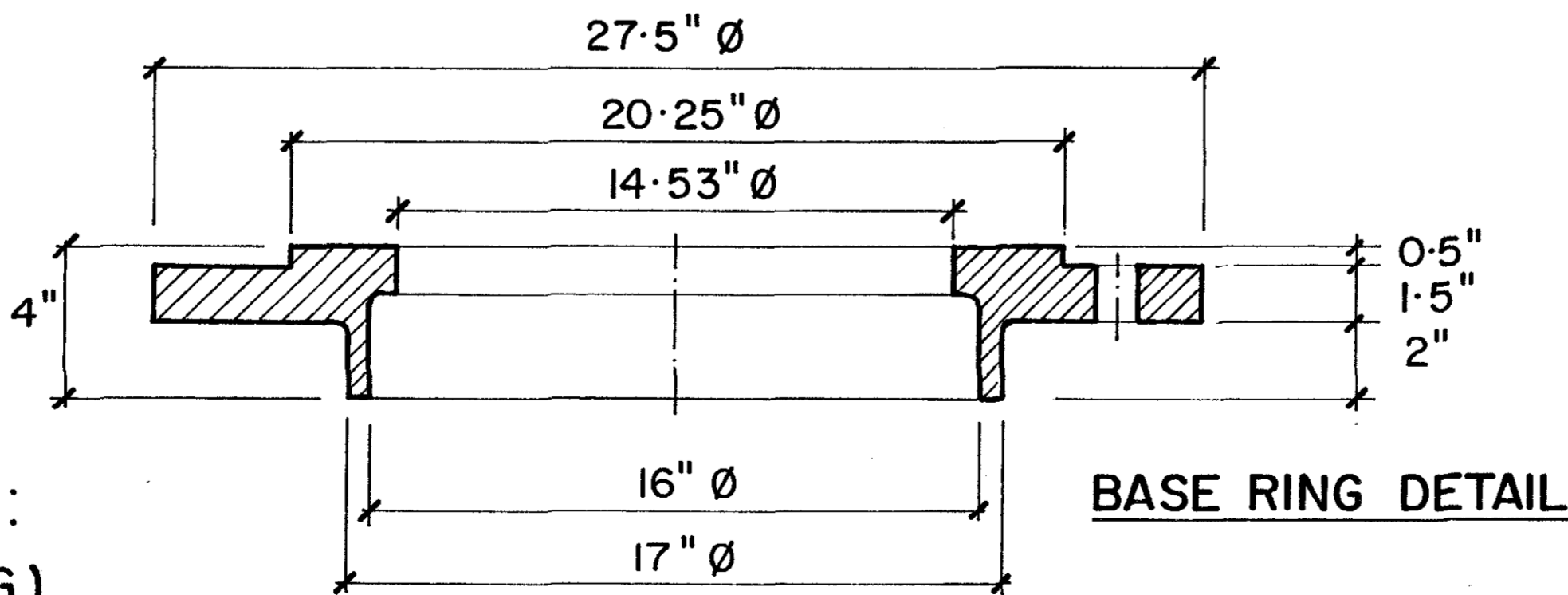


**TYPICAL COMMUNUTOR BASIN
CLOCKWISE ROTATION SHOWN**



ADJUST 3/4" NUTS (3),
BELOW ADAPTOR PLATE,
TO LEVEL COMMUNUTOR
PRIOR TO GROUTING

COMMUNUTOR WEIGHT :
900 LB (408 KG)



BASE RING DETAIL

REVISIONS		BY	DATE	APP.
		G.E.T. INDUSTRIES INC. (877) 213-7418 www.grindhog.com		
		TOLERANCES		SCALE
		DECIMAL		DRAWN BY
FRACTIONAL		APPROVED BY		
ANGULAR		DATE		REV.
PROJECT NO.		DRAWING NO. 9 0075		