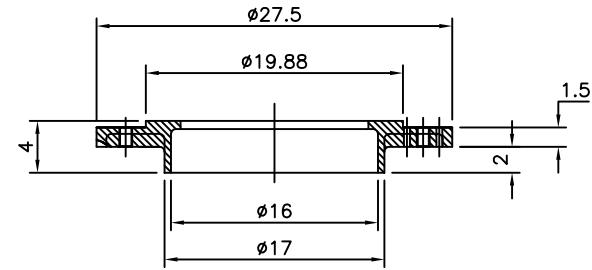
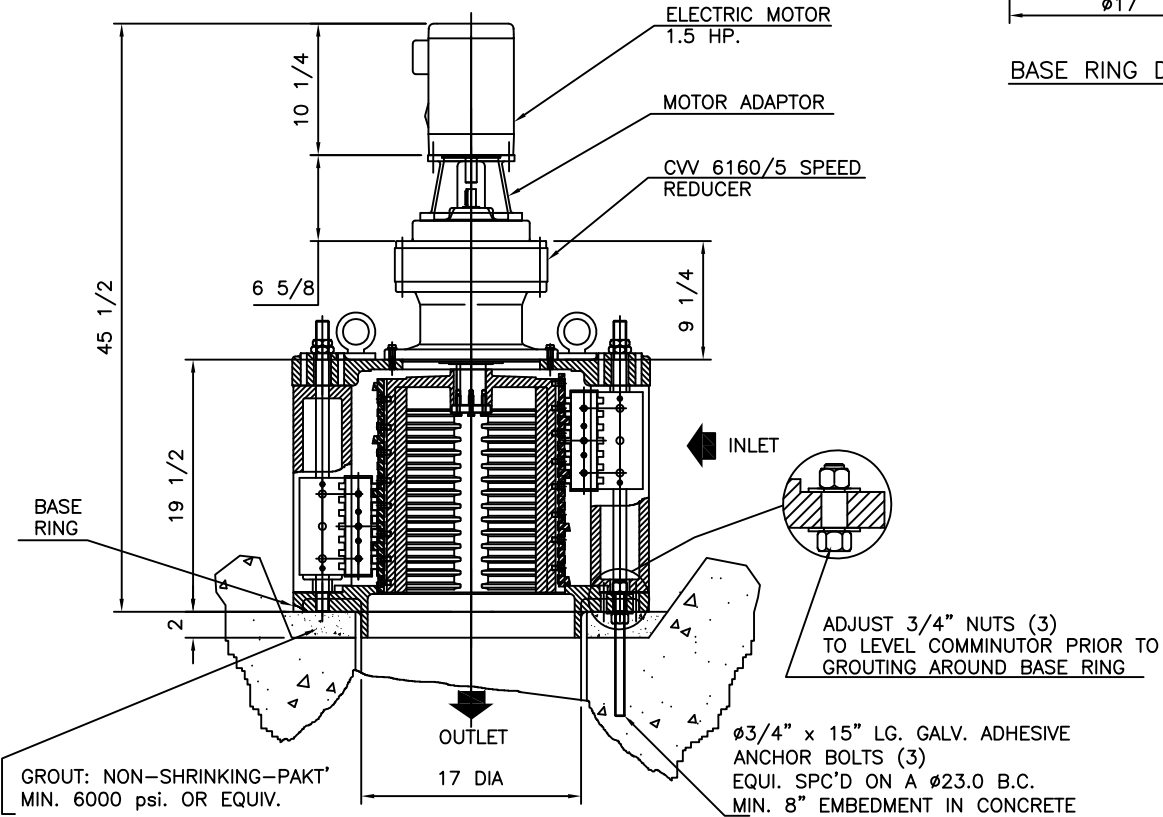


MODEL 16A STANDARD

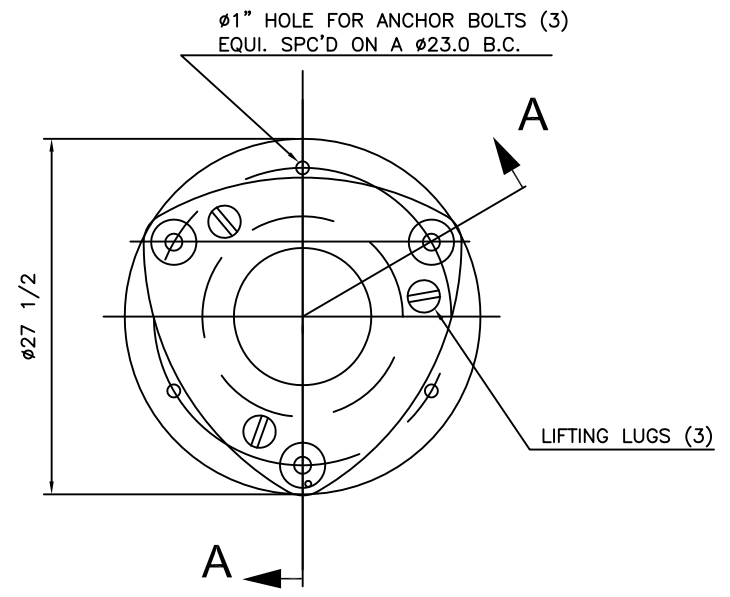
SERIAL No. X



BASE RING DETAIL



SECTION A-A



TOP VIEW OF COMMINUTOR

GROUT: NON-SHRINKING-PAKT'
MIN. 6000 psi. OR EQUIV.
BEFORE LAYING GROUT
REMOVE EXCESS CONC.
BENCHING WHERE NECESSARY,
TO ACCOMMODATE COMM.

Ø3/4" x 15" LG. GALV. ADHESIVE
ANCHOR BOLTS (3)
EQUI. SPC'D ON A Ø23.0 B.C.
MIN. 8" EMBEDMENT IN CONCRETE

MATERIALS OF CONSTRUCTION & GENERAL ENGINEERING DATA

HOUSING:	GREY IRON	CAPACITY	3.5 MGD (US) / 13200 m3/ day	INLET AREA	202 SQ IN	1303 cm sq
DRUM (SCREEN):	DUCTILE IRON (ASTM 536 GRADE 60-45-18)	DRUM SPEED	30 RPM	OUTLET AREA	121 SQ IN	780.6 cm sq
SHEAR BARS:	AISI-A2 HIGH ALLOY TOOL STEEL	ROTATION	CLOCKWISE	DRUM DIAMETER	14.5 IN	36.8 cm
CUTTING BARS:	AISI-01 TOOL STEEL REVERSIBLE	SLOT WIDTH	.470 IN / 12 mm	WEIGHT	750 LB	340 kg
HARDWARE & FASTENERS:	304 STAINLESS STEEL	No. OF SLOTS	56			
MOTOR MANUFACTURER:	BALDOR	POWER:	/ 3 / 60	RPM:	1750	REDUCER: SM - CYCLO
STYLE:	TEFC	HP:	1.5	KW:	1.12	FRAME: 145 TC
				FLANGE:	'C'	RATIO: 59:1
						RATING: 7.72 HP
						MODEL: V6160

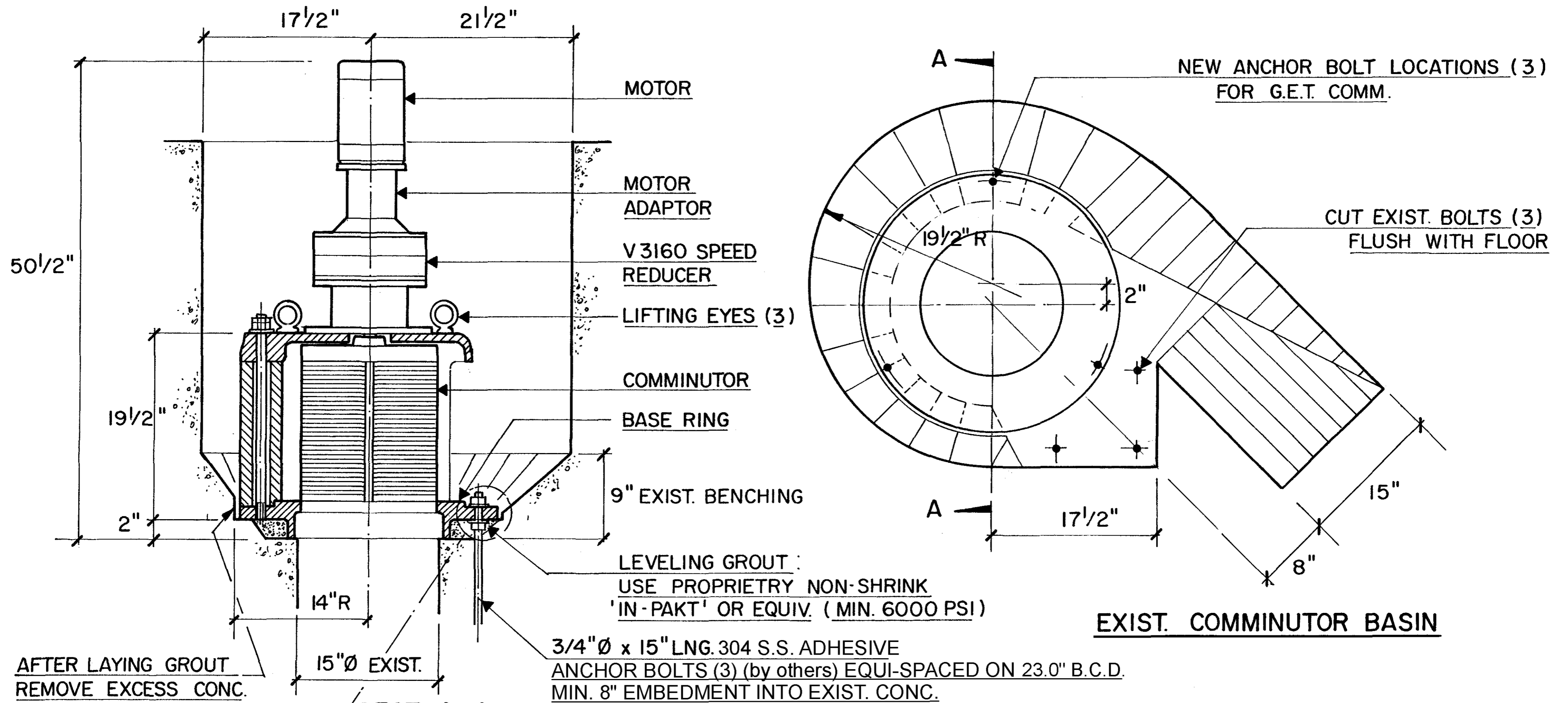
G.E.T. INDUSTRIES INC.

 get@grindhog.com
 www.grindhog.com
 1 (877) 213-7418

TOLERANCES	INFO.	SCALE	NTS
DECIMAL	INFO.	DRAWN BY	G.P.
FRACTIONAL	INFO.	APPROVED BY	W.D.M.
ANGULAR	INFO.	DATE	FILE NO.
		DWG. No.	6 0200
		REV.	

Grind Hog MODEL 16A (CAPACITY: 3.5 USMGD)

REPLACEMENT OF JONES & ATTWOOD MODEL 15R

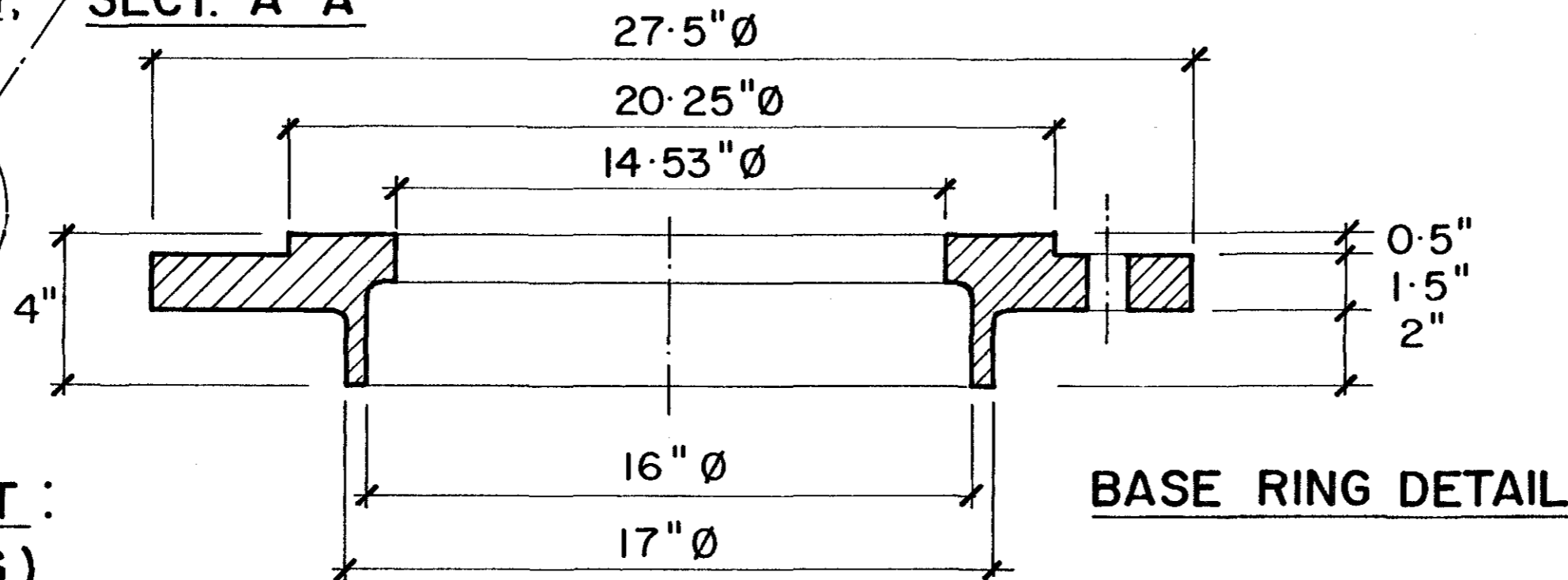


AFTER LAYING GROUT REMOVE EXCESS CONC. BENCHING, WHERE NECESSARY, TO ACCOMODATE COMM.

SECT. A - A

ADJUST 3/4" NUTS (3) TO LEVEL COMM-INUTOR PRIOR TO GROUTING AROUND BASE RING

COMMINUTOR WEIGHT :
800 LB (363 KG)



REVISIONS		BY	DATE	APP.
 G.E.T. INDUSTRIES INC. (877) 213-7418 www.grindhog.com				
TOLERANCES		SCALE		
±	DECIMAL	DRAWN BY		
±	FRACTIONAL			
±	ANGULAR			
±	DATE	PROJECT NO.	DRAWING NO.	REV.
			9 0072	