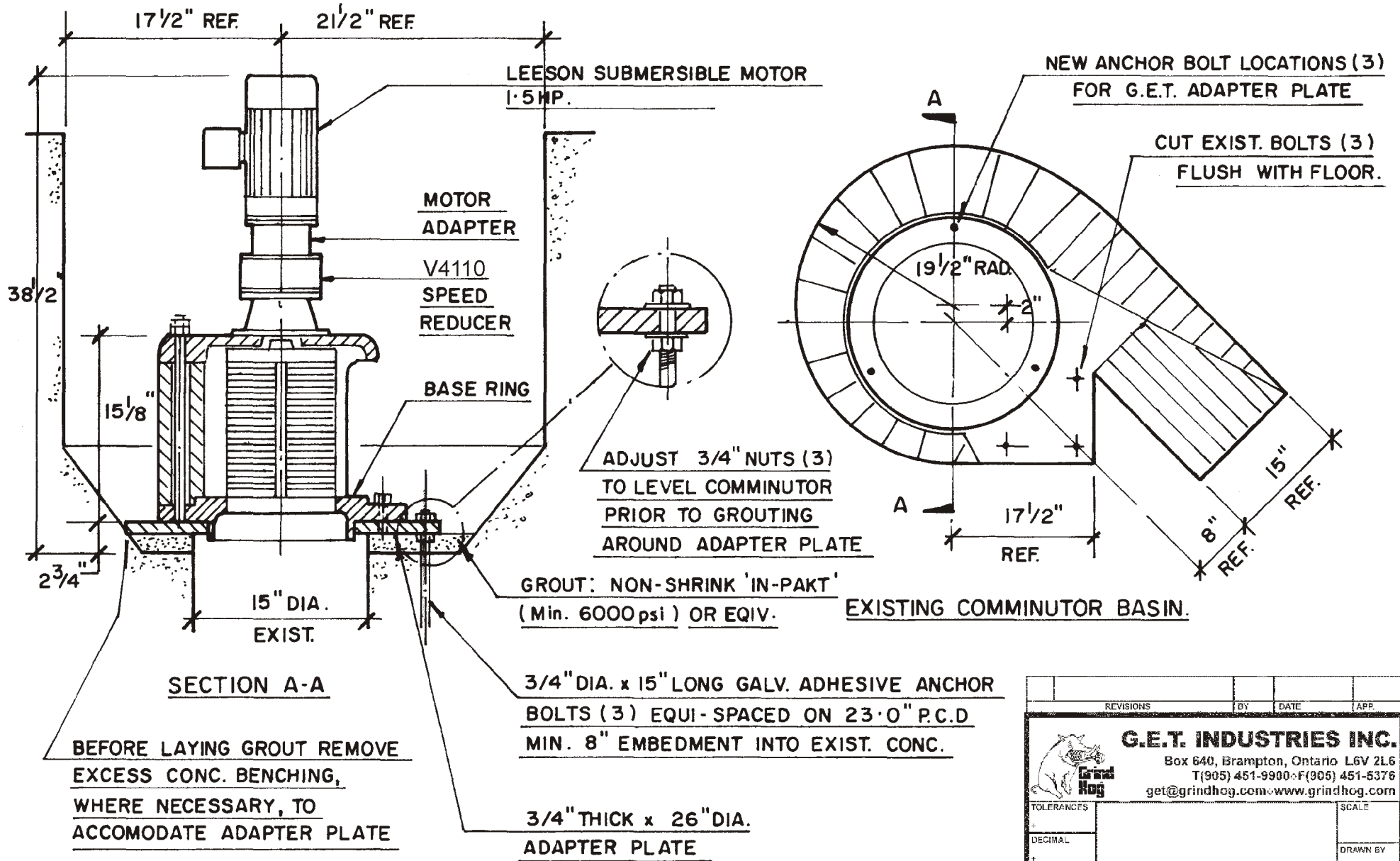



Grind Hog MODEL 10LS (CAPACITY: 1.2 USMGD)

REPLACEMENT OF CHICAGO PUMP MODEL 15C



- 10L - TEFC
- 10LS - Immersible
- 10LSX - Submersible, Explosion-proof, Continuous-In-Air

REVISIONS		BY	DATE	APP.
 G.E.T. INDUSTRIES INC. Box 640, Brampton, Ontario L6V 2L6 T(905) 451-9900 • F(905) 451-5376 get@grindhog.com • www.grindhog.com				
TOLERANCES				SCALE
DECIMAL				DRAWN BY
FRACTIONAL				APPROVED BY
ANGULAR				
DATE	PROJECT NO.	DRAWING NO.	REV.	
		retro 10LS-15C		