



MODEL 24AS T/S SPECIFICATION

1.0 General Specifications

There will be furnished one (1) only Grind Hog™ Model 24AS T/S Comminutor as manufactured by G.E.T. Industries, Inc. Rotation shall be in a clockwise direction

1.1 Design Criteria

The comminutor shall be designed to handle the flows indicated below, within the head loss noted.

- a) hydraulic capacity 10 MGD (37,800m³/day)
- b) satisfactory operation shall occur under conditions of zero flow
- c) head loss at peak flow shall not exceed 20 inches (508 mm)
- d) design shall be such that the flow enters the size reduction and screening device horizontally and exits vertically downward to facilitate the flushing of solids

1.2 Cover Plate

Shall be:

- a) of heavy-duty construction and of high quality cast iron
- b) fitted with 4 position lock down arrangement, and 2 alignment holes for repositioning following service
- c) located on, and positioned by wall mounted supports allowing for ease of removal for inspection and maintenance.

1.3 Rotating Drum Screen

- a) heavy-duty Cast Ductile Iron ASTM 536, grade 60-45-18

1.4 Cutting Elements

- a) replaceable shear bars constructed of high-quality A2 tool-steel shall be attached to the rotating drum. Each shear bar shall be machined from solid bar stock, surface ground to establish exact tolerances
- b) stationary cutting bar, shall be of high-quality 01 tool steel hardened to a minimum of 56 Rockwell C, and shall be reversible, allowing for four (4) sets of cutting edges prior to sharpening or replacement
- c) all submerged fasteners shall be of stainless steel

1.5 Motor

Immersible 3 Hp. Motor, 1750 RPM, _____ volt, _____ phase, _____ cycle, suited to periodic submergence. Power cable length 25 ft. (7.6 m)

1.6 Drive Arrangement

- a) the motor shall be close-coupled to a speed reducer drive, a heavy duty planetary gear of the totally enclosed non-vented type suitable for total submergence during emergencies

G.E.T. INDUSTRIES INC.

Toll Free: 877-213-7418 Email: get@grindhog.com Web: www.grindhog.com

SPECIFICATION cont'd...



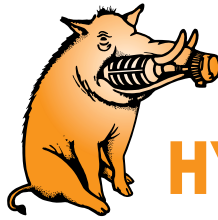
- b) double seals on the output shaft shall ensure flood-proof operation through a reduction ratio of 59:1
- c) the cycloidal reducer shall be capable of withstanding shock loads to 500% of its mechanical rating of 11.1 Hp. and be warranted for two (2) years
- d) the drive shall have a minimum full load efficiency of 90% and be pre-lubricated with grease, requiring routine maintenance every 500 to 1,000 hours

1.7 "Toilet Seat" Channel Mounting System

Shall consist of a box style structure fabricated of 304 Stainless Steel dimensioned to suit the existing channel and supported from above for ease of installation

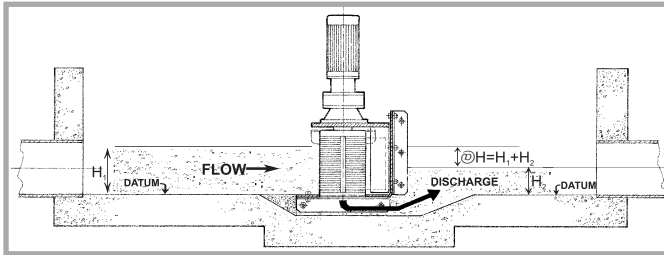
G.E.T. INDUSTRIES INC.

Toll Free: 877-213-7418 Email: get@grindhog.com Web: www.grindhog.com



Grind HogTM

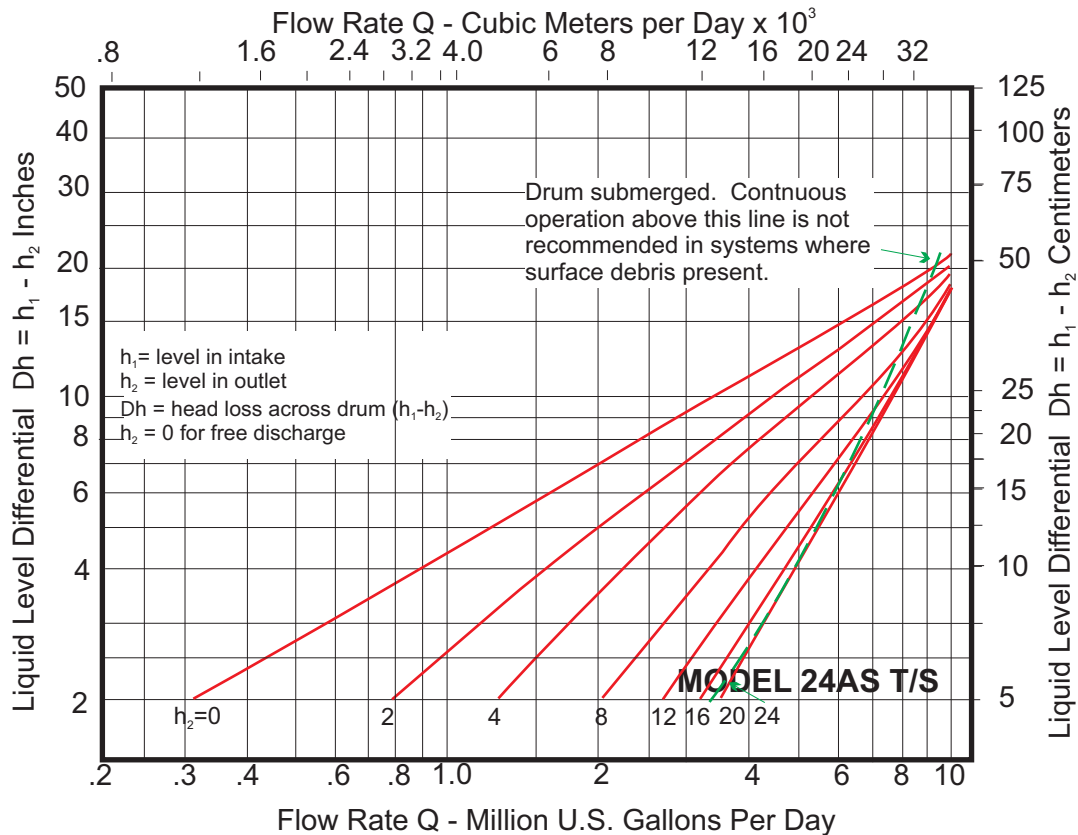
HYDRAULIC DATA SHEET IN-CHANNEL MODEL 24AS T/S



GENERAL DATA

Capacity	0-10 MGD (US)	0-37800 m ³ /day
Drum Diam.	22.5 in	57.2 cm
Inlet Area	526 in ²	3393 cm ²
Outlet Area	324 in ²	2090 cm ²
Slot Width	0.470 in	12 mm

HYDRAULIC PERFORMANCE CURVE



G.E.T. Industries Inc.

Toll Free: (877) 213-7418

E-mail: get@grindhog.com ♦ Web: www.grindhog.com



IN-CHANNEL MODEL 24AS T/S cont'd...

DESIGN FEATURES

SUMITOMO SM-CYCLO SPEED REDUCER 6000 SERIES

- HIGHEST OVERLOAD CAPACITY FOR FREQUENT STOP-START AND SEVERE REVERSING
 - SMOOTH, SILENT OPERATION
 - EXCEPTIONAL LIFE
- Torque transmitting parts roll, don't grind.
There is no sliding friction, so output torque/input horsepower efficiency approaches 95%

STATIONARY CUTTING BAR

- REVERSE-SPARE STANDARD EQUIPMENT
- A2 HIGH QUALITY TOOL STEEL
- HIGH RESISTANCE TO WEAR

CAST DUCTILE IRON SEWAGE SCREEN

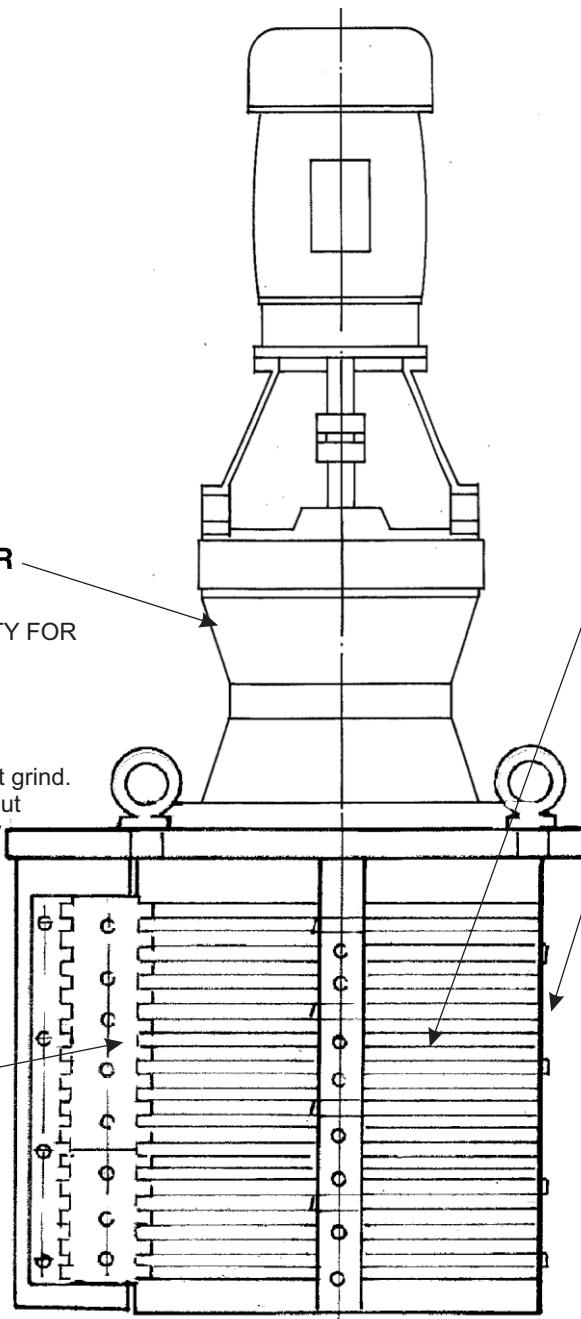
- LONG LIFE UNDER ABRASIVE CONDITIONS

ROTATING SHEAR BAR ASSEMBLY

- MACHINED FROM SOLID BARSTOCK
- PRECISE TOLERANCES MAINTAINED

SUBMERGED FASTENERS OF STAINLESS STEEL

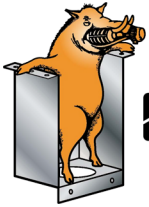
HEAVY DUTY CAST IRON CONSTRUCTION



G.E.T. Industries Inc.

Toll Free: (877) 213-7418

E-mail: get@grindhog.com ♦ Web: www.grindhog.com



Grind Hog™

MECHANICAL DETAIL

DRAWING TO FOLLOW



**Grind
Hog**

HORIZONTAL FLOW

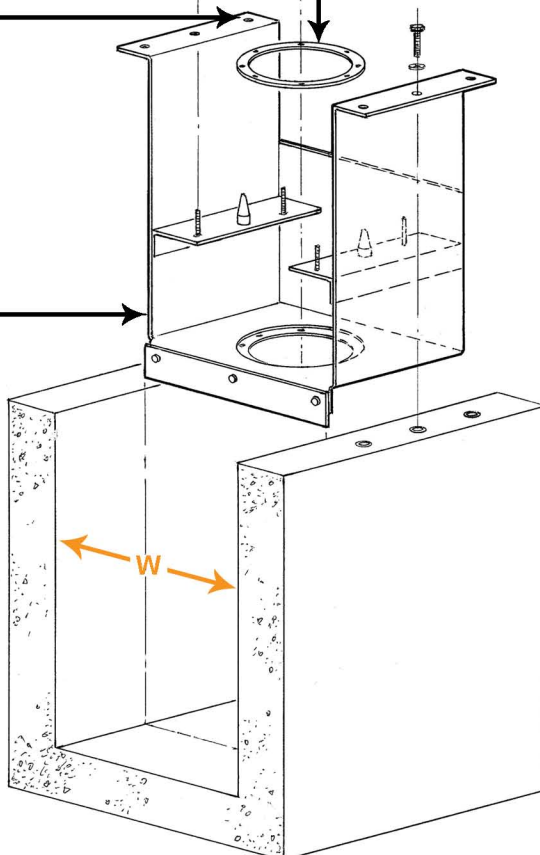
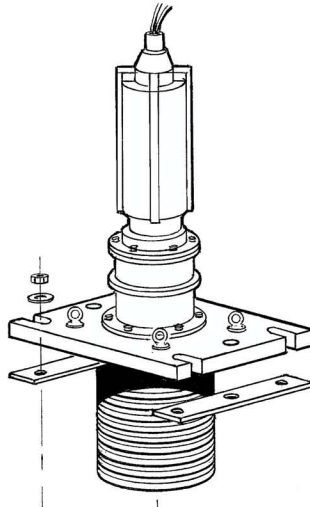
RETROFIT ALTERNATIVE

“TOILET SEAT BOX STYLE” DROP IN REPLACEMENT

Replaceable
wear ring for
extended life

Supported from
above on the
channel walls,
eliminating the
requirement for
any submerged
anchorage

Fabricated from
304 Stainless
Steel to suit
existing
channel
dimensions



PROJECT:

ANTICIPATED PEAK FLOW: _____

EXISTING CHANNEL:

Width (w): _____

Depth (d): _____

Underdrain Clearance (c): _____

MOTOR REQUIREMENTS:

Power: _____ / _____ / _____

Enclosure: _____

REPLACING

Barminutor

Infilco Degremont

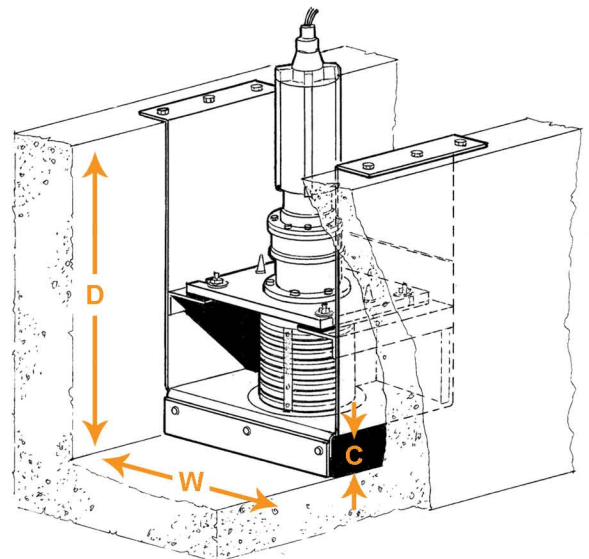
Clow Aer-O-Flo

Muffin Monster

Franklin Miller-Diminutor

Worthington

.....Among others



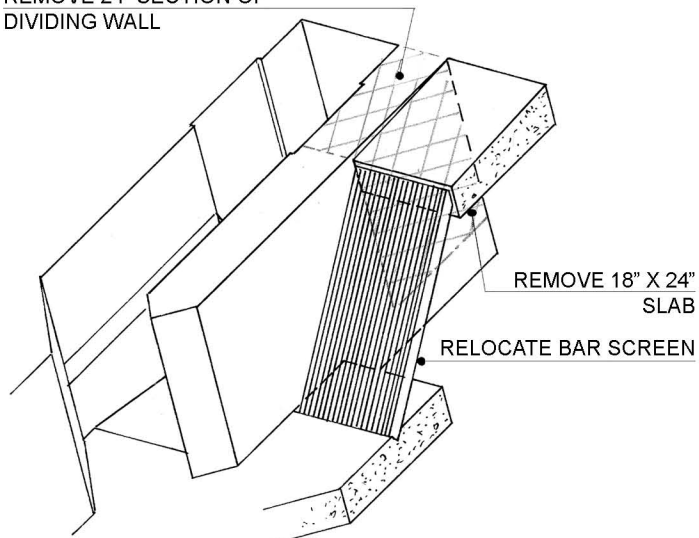
HORIZONTAL FLOW



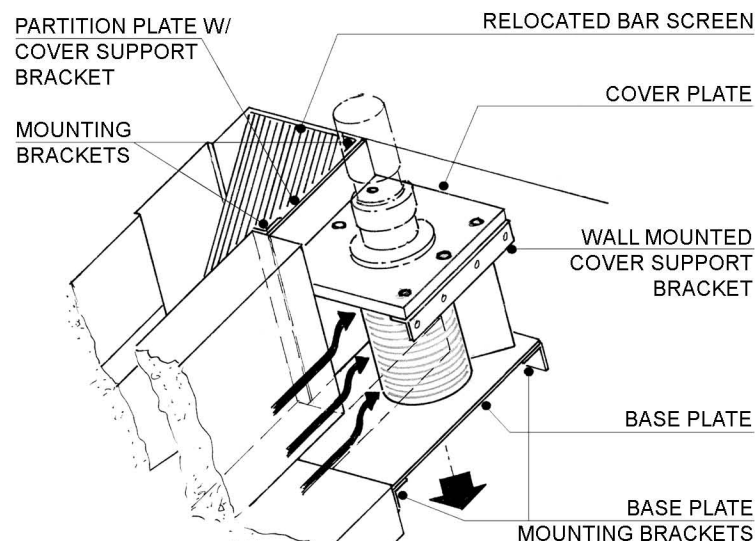
Customized to suit each application

ORIGINAL CHANNEL

REMOVE 24" SECTION OF
DIVIDING WALL



PROPOSED CHANGES



Original
Worthington 15-5



Custom Fabricated
Basin



16 ASX T/S



Custom Fabricated Basin
& 16ASX T/S
Ready for Shipment